



# ROADSIDE ATTRACTIONS

The “Mount Rushmore State” offers something for everyone, and that’s no exception for the road tripper. These fun and quirky roadside attractions make the driving travel experience that much more enjoyable. Each stop represents the unique American spirit of the state. For additional information, visit [TravelSouthDakota.com](http://TravelSouthDakota.com).

↖ Dinosaur Park!

**1880 Town (Murdo)** - The popular roadside stop is modeled after the original 1880 Town and has more than 30 buildings fashioned after models from 1880 to 1920. The buildings are authentically furnished with thousands of relics, historical accounts and photographs. Other fun features to explore include the Casey Tibbs exhibit, props from the film “Dances with Wolves” and several interactive activities offered for kids.

**Al’s Oasis (Oacoma)** - Al’s Oasis, located in Oacoma, just across the Missouri River from Chamberlain, has historically been the premier stop for travelers along Interstate 90. Al’s offers bus tour groups, vacationing families and tourists an escape from their travels. They still have delicious 5¢ coffee and are a family-run business that prides itself on being a fun, convenient and relaxing stop for you and your family.



**Dinosaur Park (Rapid City)** - Dedicated to the state in 1936, Dinosaur Park offers a fun option to stop the car and let the kids play with seven life-sized dinosaur sculptures overlooking downtown Rapid City.

**Giant Prairie Dog (Cactus Flats)** - Just off I-90 on the main road to Badlands National Park stands a 12-foot concrete prairie dog. Just down the road, visitors will enjoy the actual prairie dog towns nearby. In addition to offering a memorable photo opp, there is a small general store that sells some of the best bites west of the Mississippi, including one of their staples, 50 cent bags of peanuts.

**Pioneer Auto Show (Murdo)** - The Pioneer Auto Show originated in 1954 by AJ ‘Dick’ Geisler and his family. Since then, the Pioneer Auto Museum (as it was known back then) has been a “must-see” for those road tripping through South Dakota, especially antique and classic car enthusiasts. The accompanying museum features over 275 classic cars, trucks and motorcycles, and hundreds of other collectibles from vintage gas pumps and bicycles to antique motor toys. Also on site is a 1950s diner, which offers a slice of nostalgia with a small-town atmosphere.







**Porter Sculpture Park (Montrose)** - Located just off I-90 on the eastern side of South Dakota, Porter Sculpture Park features works of art made in an industrial style, using scrap metal, old farm equipment and railroad tie plates. The largest piece showcased in the collection is the 60-foot-tall bull head.

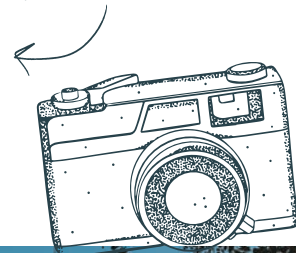
**Prairie Homestead (Cactus Flats)** - The Prairie Homestead, a popular stop when heading to the Badlands National Park, is an original sod home of South Dakotans Mr. & Mrs. Ed Brown and was built in 1909. The home is one of the last remaining original sod homes intact today. This area of South Dakota was one of the last places in the state to be homesteaded. A great place to find a souvenir, the gift shop features antiques, replica pioneer souvenirs and western artwork.

**South Dakota Tractor Museum (Kimball)** - Located just off I-90, visitors at the Tractor Museum will find historic tractors, automobiles and other farm machinery that has been restored and put on display by local farmers and mechanics. Also on site is an old windmill, an old-fashioned outhouse, a one-room country schoolhouse, a blacksmith shop and a barn filled with horse-driven farm equipment.

**Wall Drug Store (Wall)** - One of America's most treasured roadside attractions, Wall Drug started as a tiny drug store in the 1930s and has since expanded into a 76,000-square foot emporium. The fun stop offers everything from free ice water, 5-cent coffee, a restaurant known for its famous homemade donuts, a place to pick up travel essentials and activities for kids, including the Backyard playground area.



World's Largest Pheasant!



**World's Largest Pheasant (Huron)** - Driving north along Highway 37 to Huron, road trippers will be greeted by the world's largest pheasant. The large fowl, which is also the official South Dakota state bird, offers a playful photo opp for those passing through. The 28-foot-tall, 22-ton pheasant made of fiberglass and steel marks Huron as a premier pheasant hunting location since 1959.

**World's Only Corn Palace (Mitchell)** - The World's Only Corn Palace stands as a tribute to the agricultural heritage of South Dakota. The building's exterior display is completely decorated with new murals each year made from thousands of bushels of corn, grains and native grasses. 13 different colors and shades of corn are used to create new scenes for the theme of the year.

## CONTACT US

Travel South Dakota  
711 E Wells Avenue, Pierre, South Dakota, USA 57501  
605-773-3301

Katlyn Svendsen,  
Global Public Relations & Content Services Senior Director,  
[Katlyn.Svendsen@travelsouthdakota.com](mailto:Katlyn.Svendsen@travelsouthdakota.com)

Stephanie Spronk,  
Social Media Manager & Global Media Representative,  
[Stephanie.Spronk@travelsouthdakota.com](mailto:Stephanie.Spronk@travelsouthdakota.com)

Kortney Moser,  
Social Media & Public Relations Representative,  
[Kortney.Moser@travelsouthdakota.com](mailto:Kortney.Moser@travelsouthdakota.com)

MediaSD.com  
[TravelSouthDakota.com](http://TravelSouthDakota.com)

TRAVEL  
*South Dakota*